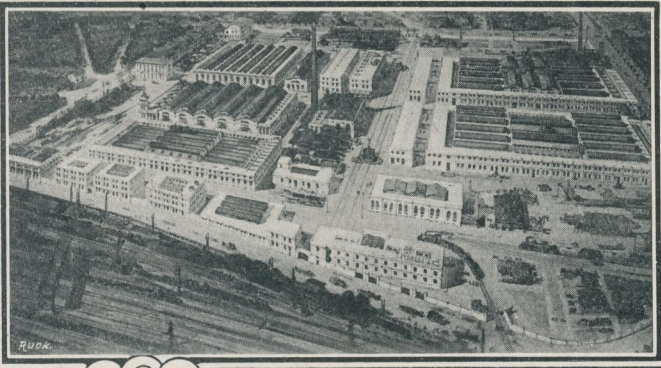
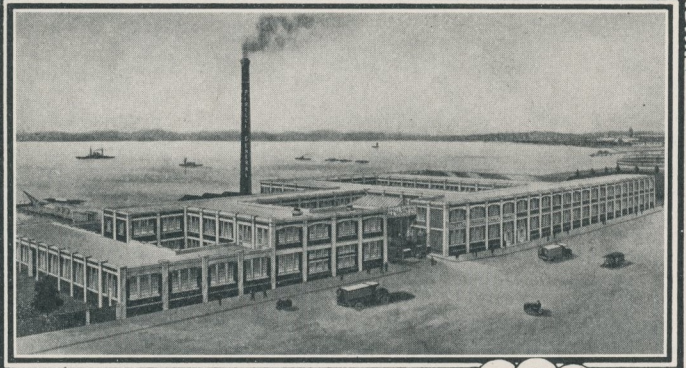


GOMME

PIRELLI



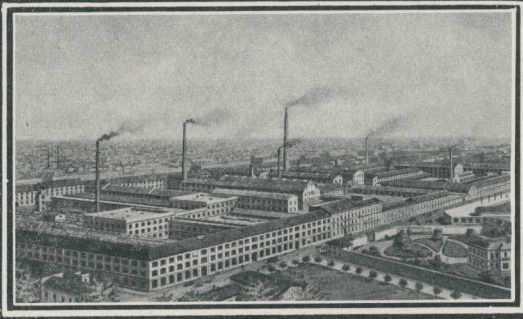
BICOCCA
(ITALIE)



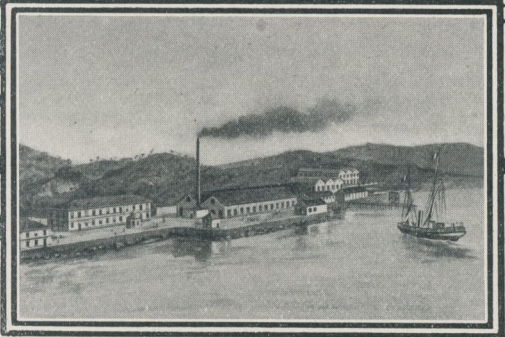
SOUTHAMPTON
(ANGLETERRE)

GOMME PIENE
PER
AUTOCARRI
VETTURE
BICICLETTE

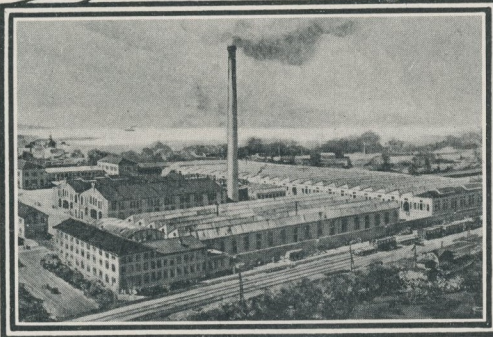
PNEUMATICI
PER
AUTOMOBILI
MOTOCICLI
BICICLETTE
AEROPLANI



MILANO
(ITALIE)



SPEZIA (ITALIE)



VILLANUEVA Y GELTRU (ESPAGNE)

LES CINQ USINES DU

PNEU PIRELLI

mesurant 350.000 mètres carrés
et employant plus de 12.000 personnes

THE FIVE FACTORIES OF

PIRELLI TYRES

measuring 350.000 sq. meters
and employing more than 12.000 people

LA BELGIQUE EN GUERRE

Texte par

MAURICE MAETERLINCK

CYRIEL BUYSSE

L. DUMONT-WILDEN

